

Colemix Dry

MINERAL COMPOUND FEED



Composition parts:

- Monosodium phosphate (11.3.10); Calcium carbonate (11.1.1)
- Additives: Manganese source as 3b506; Copper source as 3b413 and zinc source as 3b607; Vitamins biotin (H) – 3.000.000 mcg and vitamin E (3a700) min. 1.000mg
- Mn not less than 30.000mg; Zn not less than 30.000mg; Cu not less than 5.000mg



Dosage use recommendation:

- Selected animal species (following with recommendation of vitamin and microelements level for complete feed):
 - Swine (all groups) 1-2 kg/MT
 - Piglets 0,5kg/MT
 - Poultry up to 1.0kg/MT

Packaging system:

- Bags paper-polyethylene bag – 25kg net; Pallet 1000kg net

Product code:

- 051200003025

GMP+ FSA; "VLOG geprüft"

Application and benefits:

Designed for:

- Supply phosphate macronutrient with sodium in selected cell function and mineralization
- Supply phosphate for metabolic process including synthesis of energy sources (ATP/ADP)
- Balance with calcium level at feed/daily ratio – to phosphorus, high available mineral booster
- Micro-elements as zinc, copper, manganese as a functional complex for collagen formation
- Supply simultaneously complex of vitamins as biotin (vit.H) and tocopherol
- Enhance of collagen function and synthesis, reduce abnormalities of legs, skin and egg shell
- Support of immune function
- Increase production parameters via improve health status and tissue balance

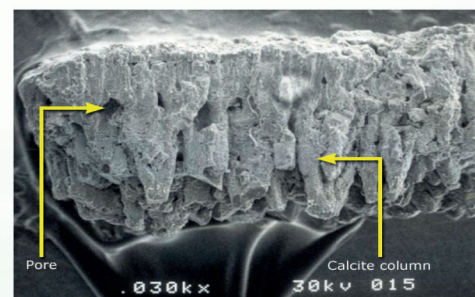
Guarantees:

- Molecules structure, optimized miscibility due to homogenous particle size - especially at premix formula
- Structure for high homogenous standard at mash feed home mixing production
- High stability by chemical form of compounds against external stress factors (thermal process, chemical treatment process at feed)
- Dust-free and free-flowing particles
- Safety for workers handling at feed production and environment
- Economic benefits and max. R.O.I. factor (lower veterinary cost per one animal, lower medicament cost and production losses)

Support hoof structure and growth – reduce selection problems at breeding flocks, gilts!



Eggs shell quality improved with Colemix Dry application (better strength, ventilation of embryos)



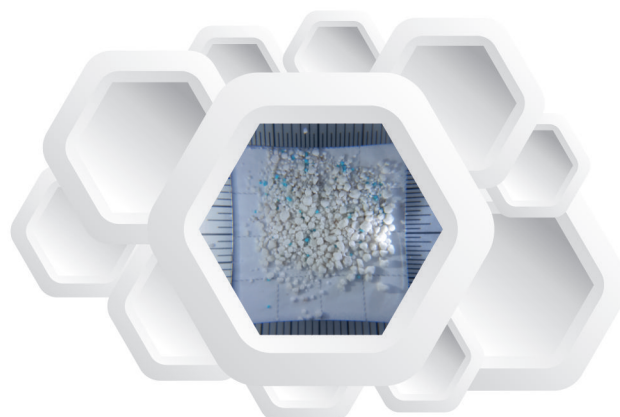
ETOS Czesław Szymendera

Head Office

Katowicka str. 83C/105
PL 61-131 Poznań, Poland
☎ +48 61 88 70 500
✉ +48 61 88 70 501
✉ biuro@etos.net.pl

Production, Warehouse and Laboratory

Golina, Jarocińska str. 42
PL 63-200 Jarocin, Poland



Product not available in all countries, dependent of registration form and requirement.

Notice: while the information contained herein (Information) is presented in good faith and believed to be correct as of date hereof, ETOS Czesław Szymendera does not guarantee satisfactory results from reliance upon such Information, disclaims all liability for any loss or damage arising out of any use of this Information or the products to which said Information refers and makes no representations or warranties, either express or implied, of merchantability, fitness for a particular purpose or of any other nature with respect to the information or products, as set forth in ETOS standard conditions of sale. Nothing contained herein is to be construed as a recommendation to use any product or process in conflict with any patent and ETOS makes no representation or warranty, express or implied use thereof will not infringe any patent.