

SaFeed Dry

MINERAL COMPOUND FEED



Composition parts:

- Products from the processing of plants (Mediterranean) (13.1.7); Seaweed meal (7.2.6)
- Kieselgur (551c gr. 1); Bentonite (1m558); a. Binders, anti-caking agents and coagulants Clinoptilolite (1g568)



Dosage use recommendation:

- Selected animal species, at complete feed mix:
 - Poultry and swine 1.0-3.0kg/MT
 - Dairy cows 25-35g/day/head to TMR/PMR ratio mix
 - Calves – 0.5kg/MT
 - Rabbits and other 1.0kg/MT

Packaging system:

- Bags paper-polyethylene bag – 25kg net; Pallet 1000kg, BigBag 1000kg net

Product code:

- 051100002025

GMP+ FSA; "VLOG geprüft"

Application and benefits:

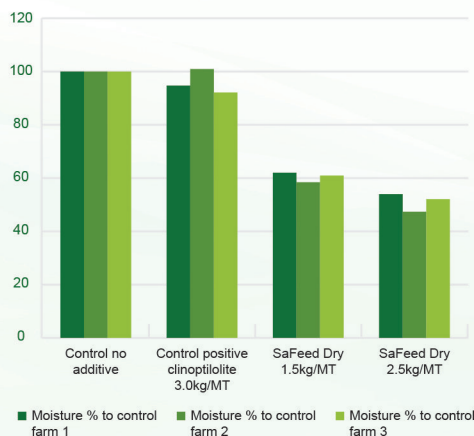
Designed for:

- Supply for effective source of fiber micro-particles at daily ratio (stimulate process of passage rate G.I.T.)
- High available source of calcium based on natural calcium carbonate form
- Additionally enhance a moisture balance at feed material and feed mix
- Reduce of active water (Aw) level
- Increase a dry matter of feed and reduce losses of nutrients at digestion process
- Some compounds are effective at mycotoxins binding process as ion-exchange
- Supporting physiological processes at G.I.T, balance of microorganism – prebiotic enhance a health status of animals
- Improve a production effectivity

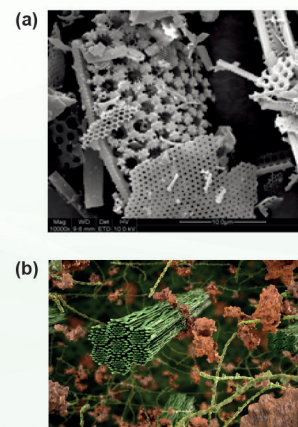
Guarantees:

- Molecules structure (multi size mix), optimized miscibility due to homogenous particle size - especially at premix formula
- Structure for high homogenous standard at mash feed home mixing production
- High stability by chemical form of compounds against external stress factors (thermal process, chemical treatment process at feed)
- Dust-free and free-flowing particles
- Safety for workers handling at feed production and environment
- Economic benefits and max. R.O.I. factor

Changes of moisture % at wet litter compare to base 3 farm houses as 100% (influence of SaFeed Dry composition on dry litter effect)
Support of FPD and welfare conditions at broilers/turkeys and growing poultry



Structure of Kieselgur (a)
Lignocellulose fiber (b)



jakosc.gmp@etos.net.pl



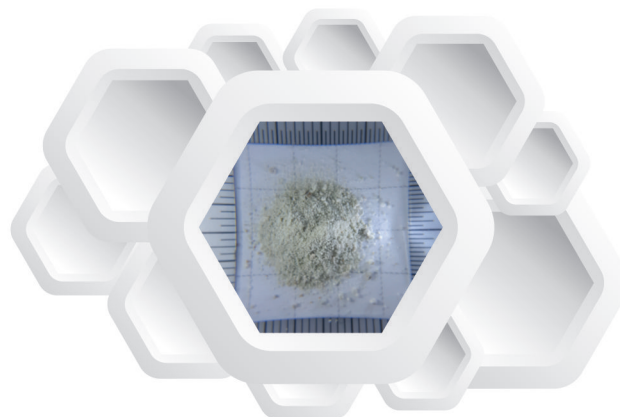
ETOS Czesław Szymendera

Head Office

Katowicka str. 83C/105
PL 61-131 Poznań, Poland
☎ +48 61 88 70 500
📠 +48 61 88 70 501
✉ biuro@etos.net.pl

Production, Warehouse and Laboratory

Golina, Jarocińska str. 42
PL 63-200 Jarocin, Poland



Product not available in all countries, dependent of registration form and requirement.

Notice: while the information contained herein (Information) is presented in good faith and believed to be correct as of date hereof, ETOS Czesław Szymendera does not guarantee satisfactory results from reliance upon such Information, disclaims all liability for any loss or damage arising out of any use of this Information or the products to which said Information refers and makes no representations or warranties, either express or implied, of merchantability, fitness for a particular purpose or of any other nature with respect to the information or products, as set forth in ETOS standard conditions of sale. Nothing contained herein is to be construed as a recommendation to use any product or process in conflict with any patent and ETOS makes no representation or warranty, express or implied use thereof will not infringe any patent.